

User Manual



APM32E103VB MINI BOARD

版本：2019.03

1. Performance and Features

- 32-bit ARM® Cortex®-M3
- Max frequency: 96MHz
- Flash: 128KB
- SRAM memory: 20KB
- Built-in FPU

2. Interface and Resources

- 1 USB (TYPE B)
- 2 KEYS
- 1 UART (Switch to UART1 or UART2 by jumper)
- 3 LEDs
- 1 RESET KEY
- 1 JTAG/SWD interface
- 81 GPIOs

3. Start

- 1) Ensure a solid connection for jumper J6, J7, J8, J9, and J10.
- 2) Connect the USB in development board with PC by a Type B cable and power the development board.
- 3) Connect the emulator with JTAG interface for MCU programming and debugging.

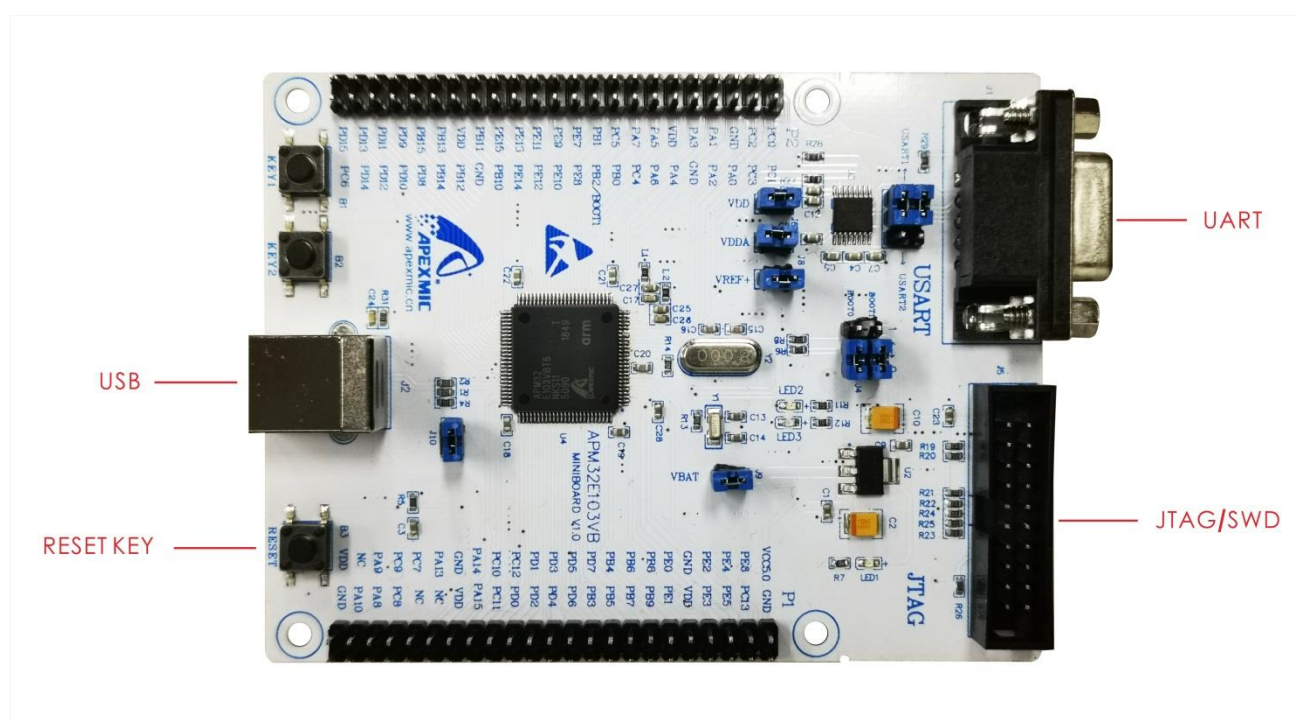
4. System Requirements

- Windows OS (7/8/10)
- USB Type A to Type B

5. Development Tool

- Keil: MDK-ARM V5.18 or above

6. Appearance



7. Schematic Diagram

Refer to 《APM32F103VB-MINIBOARD V1.0.PDF》

Apex Microelectronics Co.,Ltd.

 www.apexmic.cn

 info@apexmic.com

 +86 0756 3333768