

# User Manual

**APM32F103R8 MINI BOARD**

**Version: V1.1**

## 1. Performance

- 32-bit Arm® Cortex®-M3
- Max frequency: 96MHz
- Flash: 64KB
- SRAM: 20KB

## 2. Interface and Resources

- USB: 1 (Type B)
- JTAG/SWD: 1
- LED: 2
- KEY: 2
- RESET KEY: 1
- GPIO: 45
- USART: 1 (Switch to USART1 or USART2 by jumper)

## 3. Start

- 1) Ensure a solid connection for jumper J6,J7,J8,J9, and J10.
- 2) Connect the USB in development board with PC by a USB Type B cable and power the development board.
- 3) Connect the emulator with JTAG interface for MCU programming and debugging.

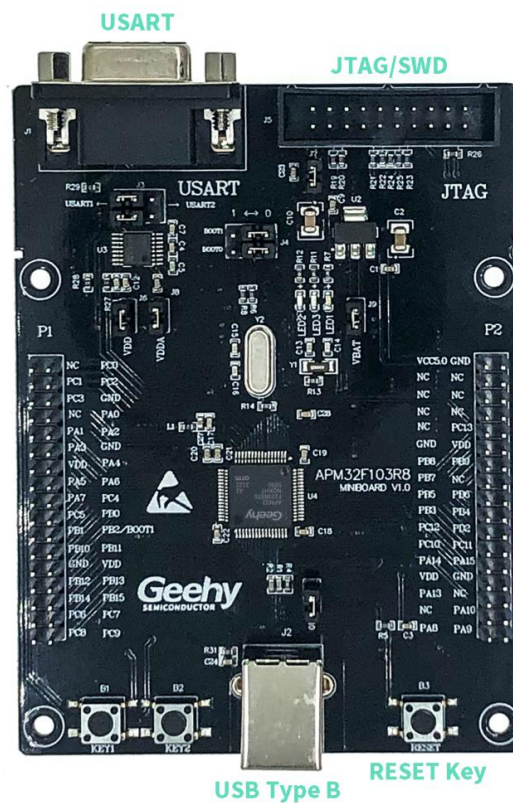
## 4. System Requirements

- Windows OS (7/8/10)

## 5. Development Tool

- Keil: MDK-ARM

## 6. Appearance



## 7. Schematic Diagram

Refer to 《APM32F103R8 MINIBOARD V1.0.PDF》